

LED Stroke Bar Light

LSBE-CP $\overline{\square}$ WS

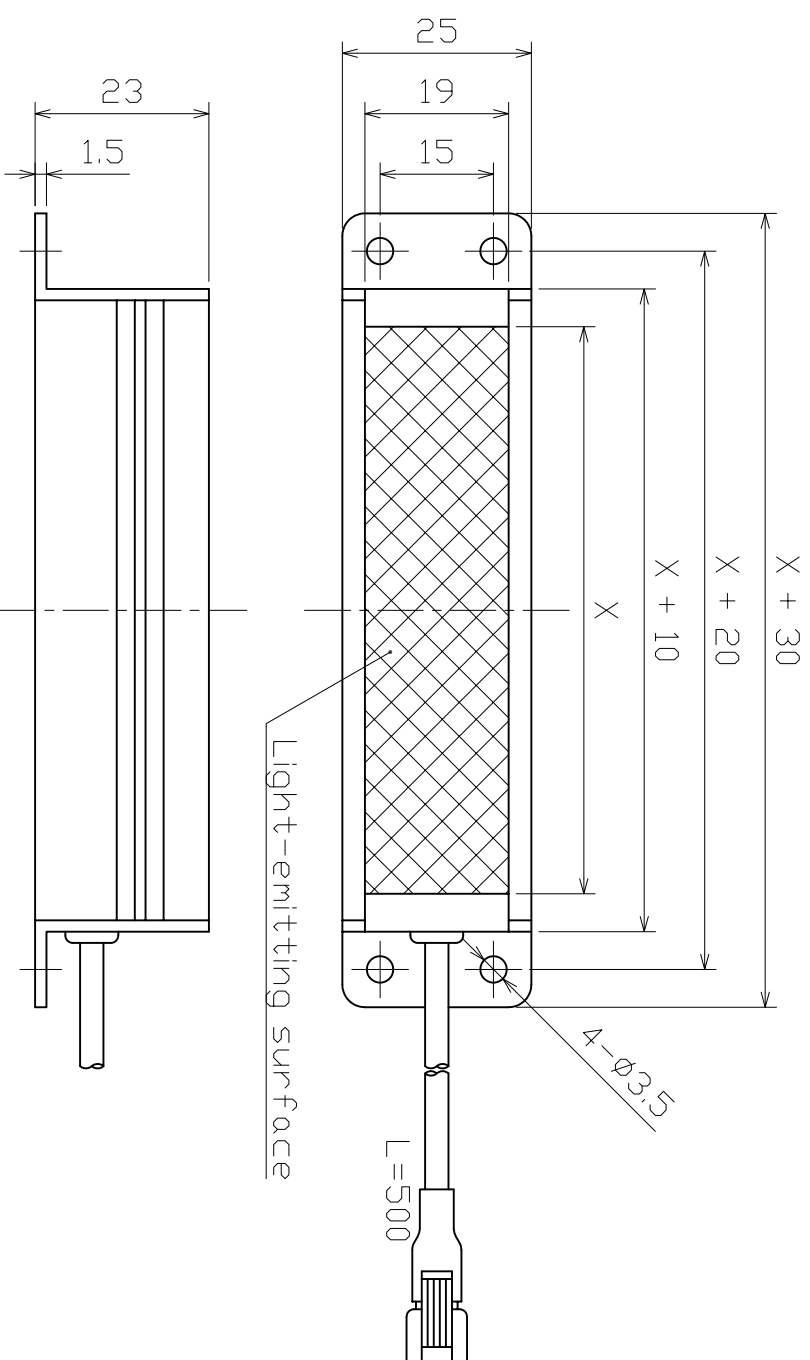
- * White LEDs
- * Only 36V USE

(Note) Please do not remove the tags attached to the product.
Light-emitting part during lighting, please do not look directly.

(注) 製品に取り付けられているタグは外さないでください
点灯中の発光部分は、直視しないでください

Do not emit light continuously.
Lighting conditions have some restrictions.
常時点灯しないでください。
点灯条件には制限があります。

| X | Peak Current | n |
|-----|---------------------|---|
| 50 | 2.5A _{o-p} | 0 |
| 100 | 4.6A _{o-p} | 1 |
| 150 | 6.5A _{o-p} | 2 |
| 200 | 8.4A _{o-p} | 3 |



Details of Connector



| | Light | Power Supply |
|-----------|--------------|----------------|
| Connector | SMR-02V-N | SMP-02V-BC |
| Contact | BYM-001T-0.6 | BHF-001T-0.8SS |